

Canadian Sex Research Forum

Spring 2006

INSIDE THIS ISSUE:

- A message from the President
- Upcoming Sexuality conferences
- FeatNotes
- Sex in the News
- The Student Scene
- Featuring.....

THE CSRF EXECUTIVE:

President:
Sandra Byers, Ph.D

Vice President:
Laurie Betito, Ph.D

Member at Large:
Don Langille

Executive Director:
Pierre Assalian, M.D.

Newsletter Editor:
Laurie Betito, Ph.D

Student Representatives:
Jonathan Huber, Natalie
Rosen and Carolyn
Birnie

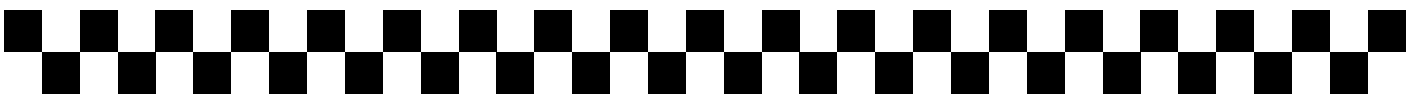
MESSAGE FROM THE PRESIDENT

Believe it or not I have been President of CSRF since our meeting in 2002. That is, somehow my one-year term as President (and Laurie's as Vice President) has been extended to 4 years. Actually, there's no somehow to it. Rather, it has to do with the WAS meeting, and the fact that we did not have a CSRF meeting in 2005. I must say that I've enjoyed being President, and the job certainly has not been too onerous—I would even say that it's been rather enjoyable.

In my mind, there have been several major accomplishments during the last four years. First, we have been successful at increasing our membership by recruiting new members, particularly student members. Megan tells me we have 10 more members than we did at this time last year, and the number likely will grow as some of our tardy members get their dues in (hint hint). So, keep recruiting those new members. Second, we have set up a list serve. This has certainly facilitated communication, and I think will lead to at least one panel discussion at the meeting in September that might otherwise not have occurred. Third, we finally have a website (thanks Larry), which makes it easier to get the word out about us to the world in general and prospective members in particular. Fourth, we have put out two newsletters a year in each of the last 4 years. Thanks Laurie for doing such a great job at editing the newsletter, and to the students for the student column. And, thanks to Alex for keeping us up-to-date on sexual goings on in Canada and abroad. Finally, we've added a student executive which has not only facilitated recruiting new student members and making them feel welcome, but also giving students a voice in our organization.

This is all a way of leading up to the point—we'll be having an election for a new executive at the September meeting. So, please consider nominating someone who you feel would be good for the executive; better yet, nominate yourself if you're willing to serve. I can honestly say that the job is not too time consuming, and certainly has been a pleasure.

Sandi



FEAT NOTES.....

Elke Reissing received tenure and promotion to the rank of associate professor. She was also awarded the CPA President's New Researcher Award. Congratulations Elke and welcome back to the workforce!

Baerbel Knauper has published several papers:

Knauper, B., Kornik, R., Atkinson, K., Guberman, C., & Aydin, C. (2005). Motivation influences the underestimation of cumulative risk. *Personality and Social Psychology Bulletin*, 31(11), 1511-1523.

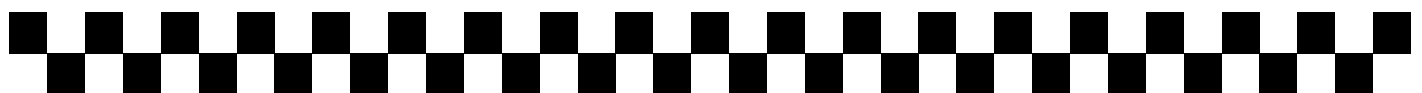
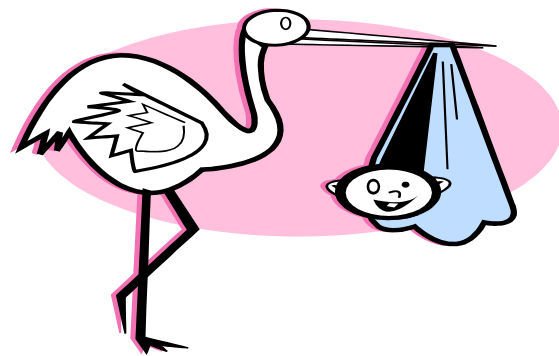
Rosen, N. O., Knauper, B., Mozessohn, L., & Ho, R. M. (2005). Factors affecting knowledge of sexually transmitted infection transmissibility in healthcare providers: Results from a national survey. *Sexually Transmitted Diseases*, 32(10), 619-624.

Laurie Betito has been elected President of the Sexual Health Network of Quebec (previously Planned Parenthood)

Stephanie Mitelman has been named the Executive Director of the Sexual Health Network of Quebec. She is offering teacher training seminars across Canada. For more information visit www.sexexpressions.ca

BIRTH ANNOUNCEMENTS: Congratulations!!

Baerbel Knauper: Ella was born on January 12th





THE STUDENT SCENE.....

For this edition of the Student Scene, we would like to turn the spotlight on a new student CSRF member, Kelly Brook Smith.

Kelly grew up in Vancouver, British Columbia where she completed her undergraduate degree in Psychology. She moved to Kingston, Ontario in the Fall of 2003 to begin her Masters in Clinical Psychology at Queen's University. Her research has focused on both female and male urogenital chronic pain conditions and its impact on sexual, marital, and family relationships. Her MA research examined the psychosexual functioning of men with chronic pelvic pain syndrome (CPPS) and their partners. Having completed her MA in 2005, Kelly began her PhD under the supervision of Dr. Caroline Pukall. This research examines relationship and sexual functioning in women with vulvodynia [both generalized vulvodynia (GVD) and vulvar vestibulitis syndrome (VVS)] and their partners. Kelly's research is funded by a Social Sciences and Humanities Research Council of Canada (SSHRC) Canada Graduate Scholarship (2005-2008). Recently, Kelly was awarded the 2006 Student Research Award from the Society for Sex Therapy and Research (SSTAR).

Natalie: So how do you like Kingston? A bit of a change from warm, beach-lined Vancouver!

Kelly: It is a change! However, I like Kingston very much; it has become a home away from home. The Queen's community and my peers and mentors here are wonderful, and helped ease my transition from Vancouver. I must admit, though, I do miss my family, the mountains, and the ocean!

Natalie: How did you become interested in sex research?

Kelly: I was always interested in health psychology, and the impact that chronic health conditions have on one's social relationships, particularly their family relations and intimate partnerships. Meeting Caroline at Queens and having the opportunity to collaborate with her on a project exposed me to sexuality research, and from there I was hooked! Five years ago, I never thought I would be a sex researcher (I started out studying children and parents with pain)- yet, here I am, I love it, and am never looking back!

Natalie: Do you also enjoy clinical work in this area (sex or couples therapy)?

Kelly: To date, my work with couples in a sex therapy context has been limited. I thoroughly enjoy clinical work and would love to work clinically with couples. I am excited to pursue future training in sex and couples therapy!

Natalie: What study are you currently running or planning to do next?

Kelly: I am in the midst of planning my PhD study, examining partner relationships among women with GVD and VVS. This will likely involve a series of studies with both women and their partners.

Here's a sampling of Kelly's publications:

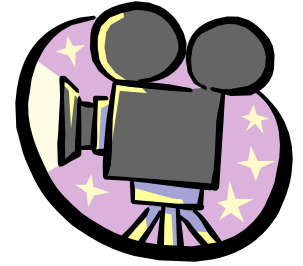
Pukall, C.F., **Smith, K.B.**, Sutton, K.S. (in press). Urogenital pain in women: Clinical considerations. In M. Fall, A. Baranowski, & P. Abrams (Eds.), *Urogenital Pain in Clinical Practice*. New York: Taylor & Francis.

Smith, K.B., Pukall, C.F., Tripp, D.A., & Nickel, J.C. *Sexual Function, satisfaction, and depression among men with Chronic Prostatitis/Chronic Pelvic Pain Syndrome (CP/CPPS)*. Paper presented at the 31st Annual Meeting of the Society for Sex Therapy and Research, Philadelphia, PA.

We'd also like to welcome any other new student members to CSRF. We're looking forward to meeting and getting to know everyone in September. See you in Ottawa!

Natalie Rosen, Jonathan Huber & Carolyn Birnie
natalie.rosen@mcgill.ca

FEATURING.....Dr. James Macpherson Gripton Oct. 19, 1921-Nov. 1, 2005



Jim Gripton was a Renaissance person in social work. Over the course of his 60 year career, he excelled in numerous roles – clinician, sex therapist, educator, researcher, author, workshop facilitator, field instructor, field liason, sex therapy supervisor, administrator and pioneer in introducing computers into social work practice and education. He “retired” from the Faculty of Social Work, University of Calgary in 1987, becoming a Professor Emeritus and continuing with his private practice, research consultation, workshops, media involvement and publishing until near the end. He had lived with heart disease and diabetes for 17 years and multiple myeloma for 7; his oncologist recently noted that there was no medical explanation for Jim’s living the past three years given his medical status. Several persons have noted that the love of his profession was a major factor that kept him going. His success has been well recognized by his professional colleagues: Jim received the Canadian Association of Schools of Social Work Honourary Life Member Award (1997), a Distinguished Service Award from CSRF (2003) and the Life Time Achievement Award (2006) from the Faculty of Social Work, University of Calgary and the Alberta College of Social Workers.

He saw himself primarily as an innovator and there were many firsts within his career. Within sexuality, he was among the earliest to recognize the need to prepare social work students and their supervisors for practice in sexual problems. To this end, he initiated and implemented with his colleague and later, partner, Mary Valentich, the first Human Sexuality course and the first elective in the history of the St. Patrick’s School of Social Work, Carleton University. The course was limited to 5 men and 5 women and finally offered in 1973 after two years of struggle for approval. In 1976 he initiated the first Human Sexuality course in the Graduate School of Social Work, University of Denver. Upon joining the School of Social Welfare in 1976 at the University of Calgary, he and Mary continued to teach the service Human Sexuality course for 25 years, and to initiate two more Human Sexuality courses specifically designed to prepare social work students for practice in sexual problems. To facilitate students’ engaging in practice, Jim devised a classification system of the types of problems encountered in the diverse settings where social workers practiced. To prepare himself for practice as a sex therapist, he undertook a one year internship in 1977 studying with Dr. Kathy Cairns (a long-time CSRF member), thereby becoming one of two social workers in Calgary to offer sex therapy.

A supporter of national organizations, he became a Life Member of the American Association of Sex Educators, Counselors and Therapists in the late 1970s as well as certifying as a Sex Educator, Counselor, Sex Therapist, and most recently as Diplomat of Sex Therapy. In this time period, he also joined the Canadian Sex Research Forum, serving as Executive Director in 1992-3 and helping to organize a conference in Banff and one in Fredericton. In 1978 he was a founding member of Janus Associates now one of the largest private practice outfits in Calgary. He served for over 7 years on the social work Private Practice Committee in Alberta, initiating its web site and helping to devise standards for private practice as well as introducing the first university social work course on Private Practice.

Over the years Jim proposed and offered, usually with Mary, numerous workshops, both locally and nationally: these included teaching children about sex, teaching children about HIV/AIDS, adolescence and sexuality, foster parenting and sexuality, couples and sexuality, developing practice competence in sexuality, social

FEATURING.....Dr. James Macpherson Gripton
Oct. 19, 1921-Nov. 1, 2005

CONT'D

policy and human sexuality, sexual abuse, violence toward women, sexual misconduct in practice, and more recently, sexuality and aging. During the past decade, he focused on educating human service professionals on making decisions about dual and multiple non-sexual matters in professional relationships. A long time advocate of social justice and elimination of discrimination, he did not hesitate to comment in the media on sex education, sexual orientation, homophobia, the nature of families, and sexual oppression. He also prepared a number of briefs on sex education, child sexual abuse by clergy, and sexual and non-sexual boundary violations in professional practice. He was a member of the Alberta College of Social Workers' Disciplinary Committee since its inception in 1995 until 2005 as well as being an Expert Witness on several occasions. He also served from 1984 to 87 on the Editorial Board of the Journal of Human Sexuality and Social Work.

Throughout his career he promoted a comprehensive, research based sex education for everyone with experientially oriented teaching techniques as well as early and creative use of explicit films and the modality of small group discussion. He was gifted at developing paradigms for teaching purposes in human sexuality and by the mid-1970s was advancing ideas of feminism and a gender analysis to practice in sexual problems. He also developed several human sexuality teaching videos in which he roleplayed a number of characters. He often expressed the sentiment that his greatest joy in teaching derived from human sexuality courses; many students over the years have commented that they will never forget "that course with the sex films." His one regret was that he never found the time to develop major research ventures in human sexuality, though he published numerous articles and co-edited two books, one on Feminist Perspectives on Social Work and Human Sexuality (1985) and the other on Social Work Practice in Sexual Problems (1986). His research included examining team teaching vs. individual teaching in human sexuality, users of pornography, effects of cardiac illness and surgery on sexual attitudes and satisfactions, and evaluation of treatment of sex offenders.

An inveterate conference attendee, Jim presented his last paper at the International Congress on Sexology at Montreal in July 2005 as well as doing an interview on Sexuality and Aging for The Sex Files. In June 2005 he participated in a 6 part series on The Future of Aging, appearing comfortably both as the respected professor in blue suit and tie commenting on sex research, and in his bathing suit in the hot tub with his partner. You were one of a kind Jim; we'll miss you and your smile at CSRF.

Mary Valentich

By Alex McKay

Sex in the News



NEW CSRF MEMBERS FOR 2005

STUDENT MEMBERS:

Rebecca Cherner: University of Ottawa

Hannah Davis: University of Ottawa

Gina DiGiulio: University of Ottawa

Rebecca Harriman: University of Saskatchewan

Genevieve Laliberte: University of Ottawa

Amy Menard: Carleton University

Kelly Smith: Queen's University

FULL MEMBERS:

Judith C. Daniluk: Professor and Director of Clinical Training, Dept. of Educational & Counselling Psychology, University of British Columbia

Elena Hannah: Faculty member, Psychology Dept., Memorial University of Newfoundland

Melanie Morrison: University Professor, Dept. of Psychology, University of Saskatchewan

Caroline Pukall: Psychologist, Dept. of Psychology, Queen's University

MARK THESE DATES ON YOUR CALENDER:

June 27-July 1, 2006: American Association of Sex Educators, Counselors & Therapists (AASECT). *Gumbo Sexualite: Spicing up education and therapy.* St. Louis, Missouri. For more info contact www.aasect.org.

September 29-October 1, 2006: Canadian Sex Research Forum Annual Meeting, Ottawa, Canada

The conference will take place at the Courtyard Marriott Hotel in Ottawa. The hotel is in the middle of the famous Byward Market and is at walking distance of just about everything of interest in the Ottawa downtown area.

Rooms have been reserved for conference participants at a rate of \$ 132,-

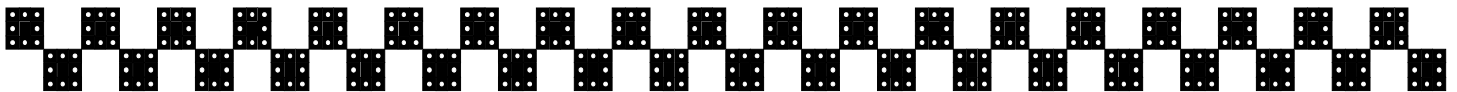
You can check out the hotel via the following website: www.marriottcourtyardottawa.com

You can reach the hotel: Tel: 1-800-321-2211; Fax: (613) 241-4804

Address: 350 Dalhousie Str., Ottawa, ON, K1N 7E9

Airport shuttle service to the hotel is available, but for a fee (\$16,- one way / Taxi is about \$30,-)

November 9-12, 2006: SSSS Annual Meeting. Las Vegas, Nevada.



To contribute to the CSRF Newsletter:

Send us your latest accomplishments, news, or anything else you would like us to include in our next newsletter. E-mail Laurie Betito, Ph.D, Vice President and Newsletter Editor, at laurie@drlaurie.com

We look forward to hearing from you!